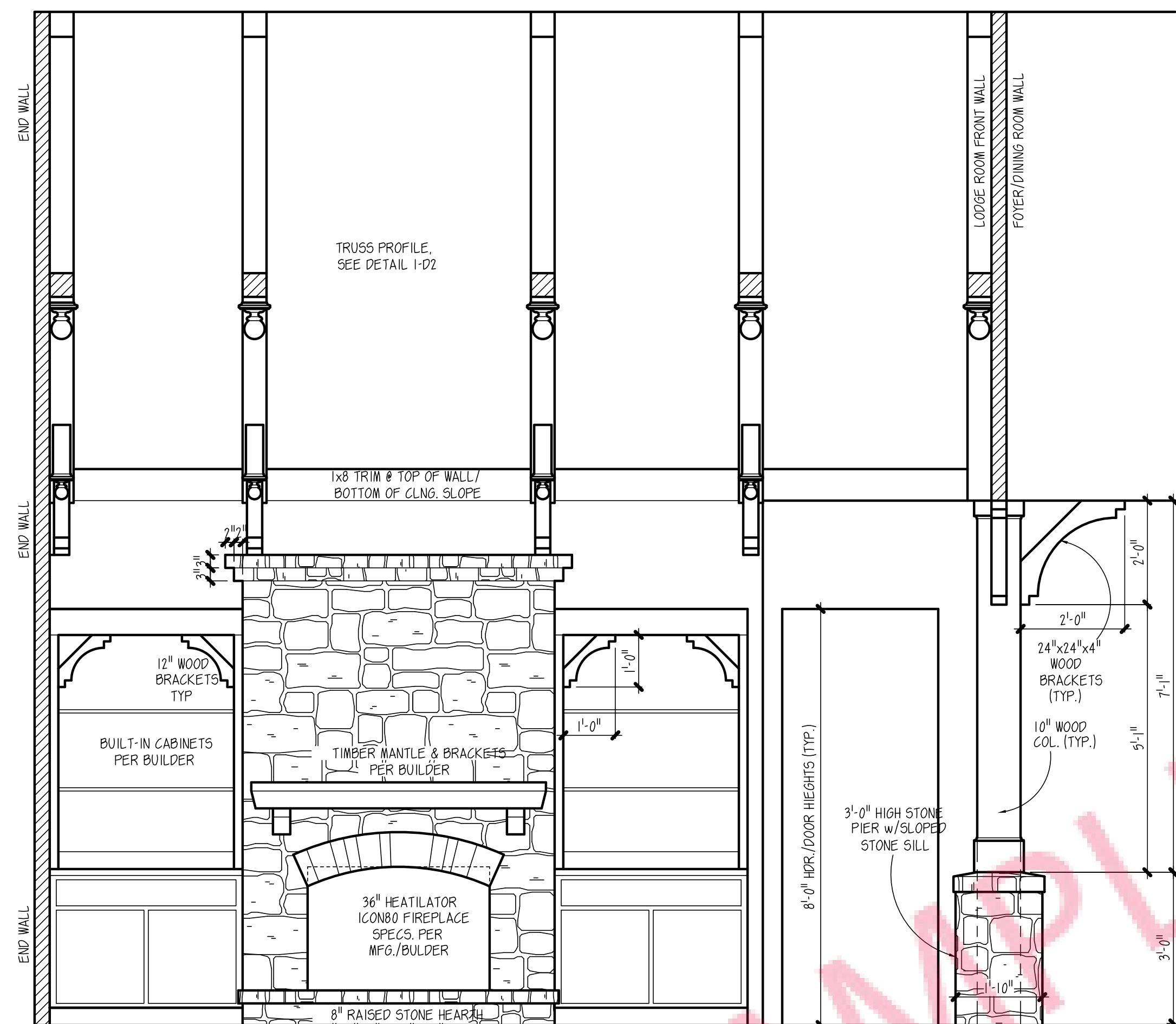
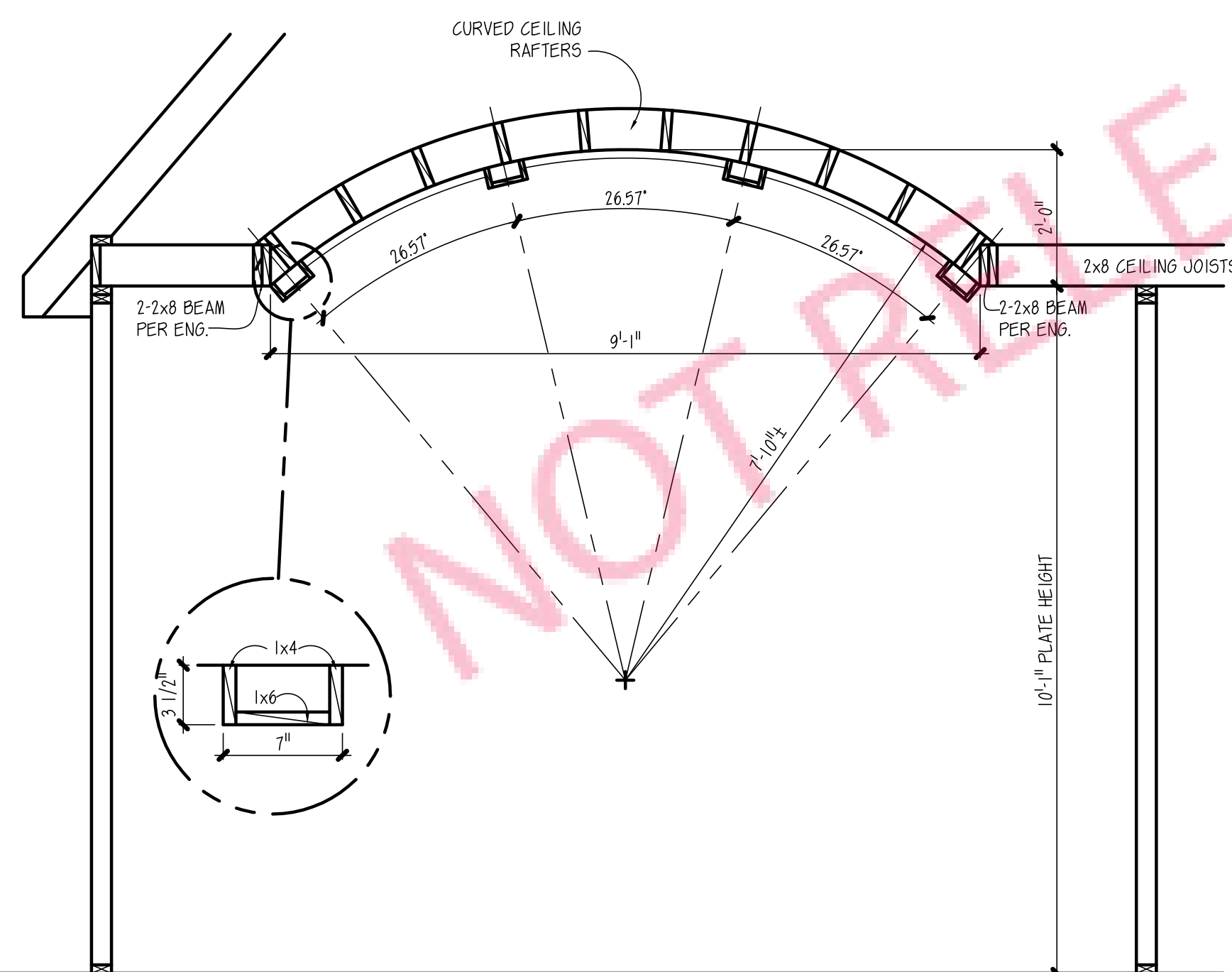


REAR ELEVATION

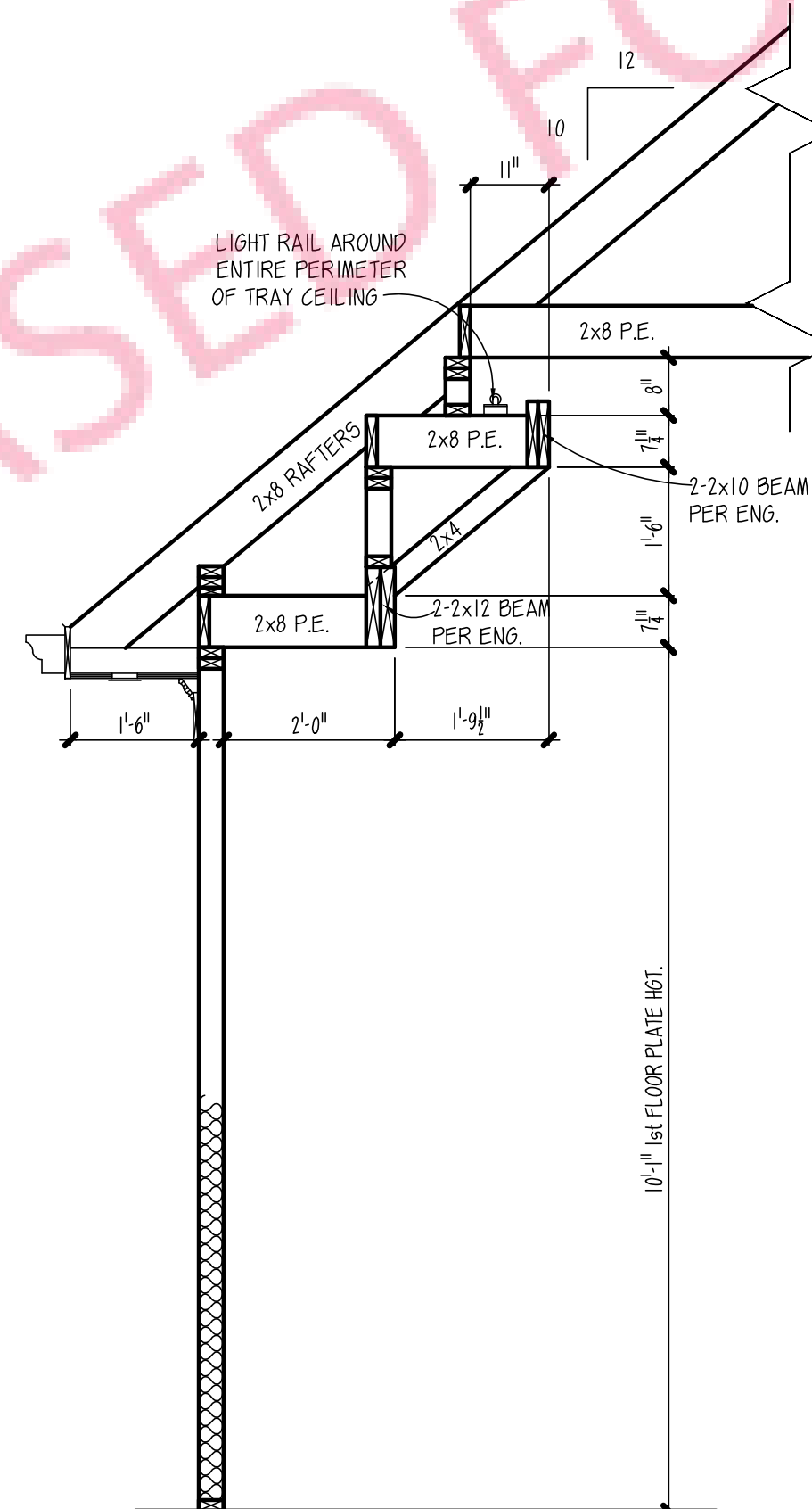
SCALE: 1/4" = 1'-0"



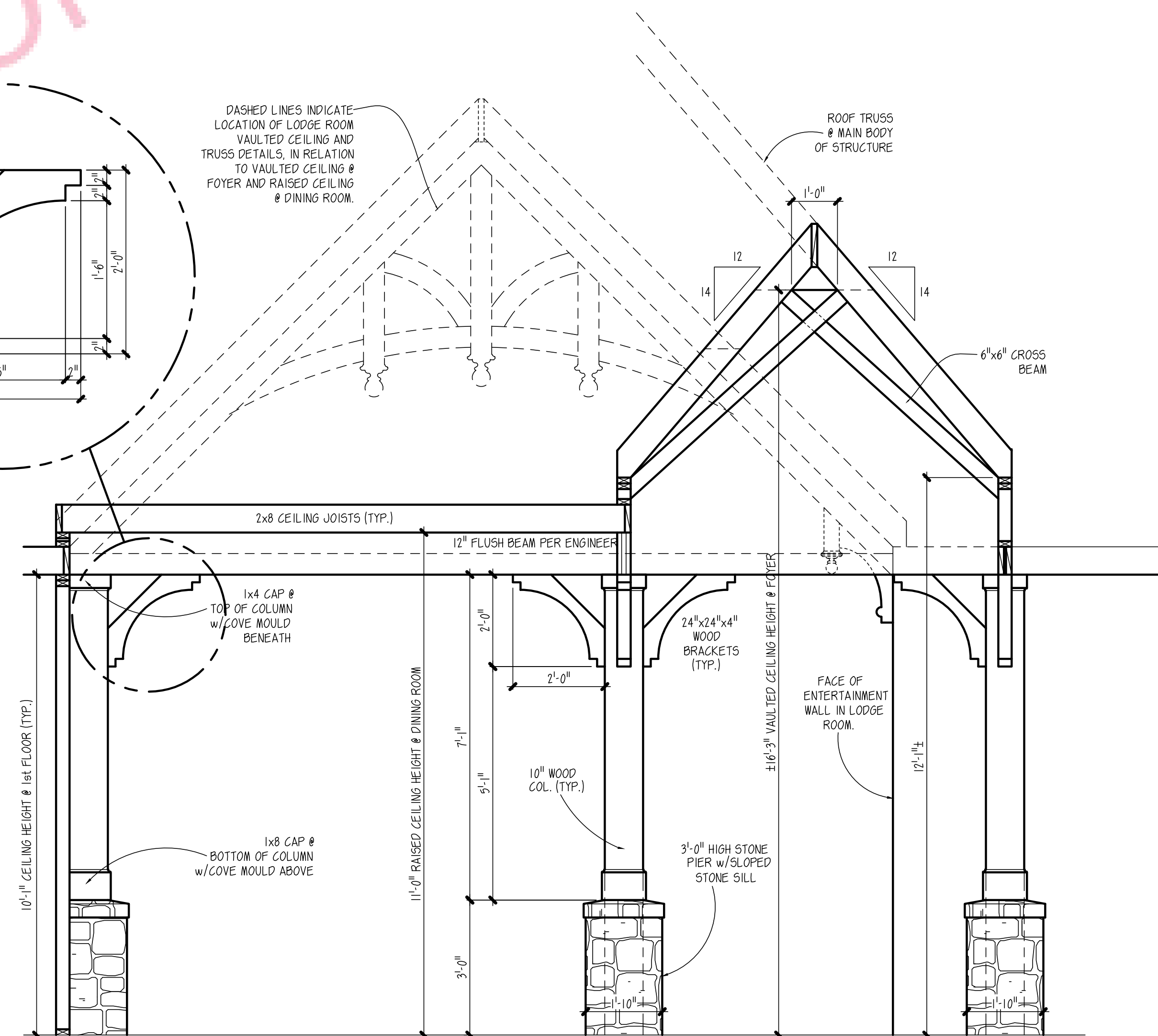
1 LODGE ROOM RIGHT SIDE DETAIL
SCALE: 1/2" = 1'-0"



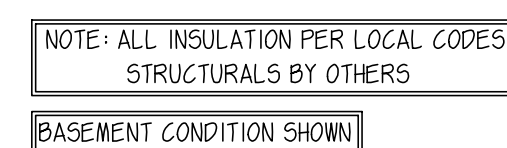
3 MASTER BATH CEILING DETAIL
SCALE: 1/2" = 1'-0"



2 MASTER SUITE CEILING DETAIL
SCALE: 1/2" = 1'-0"

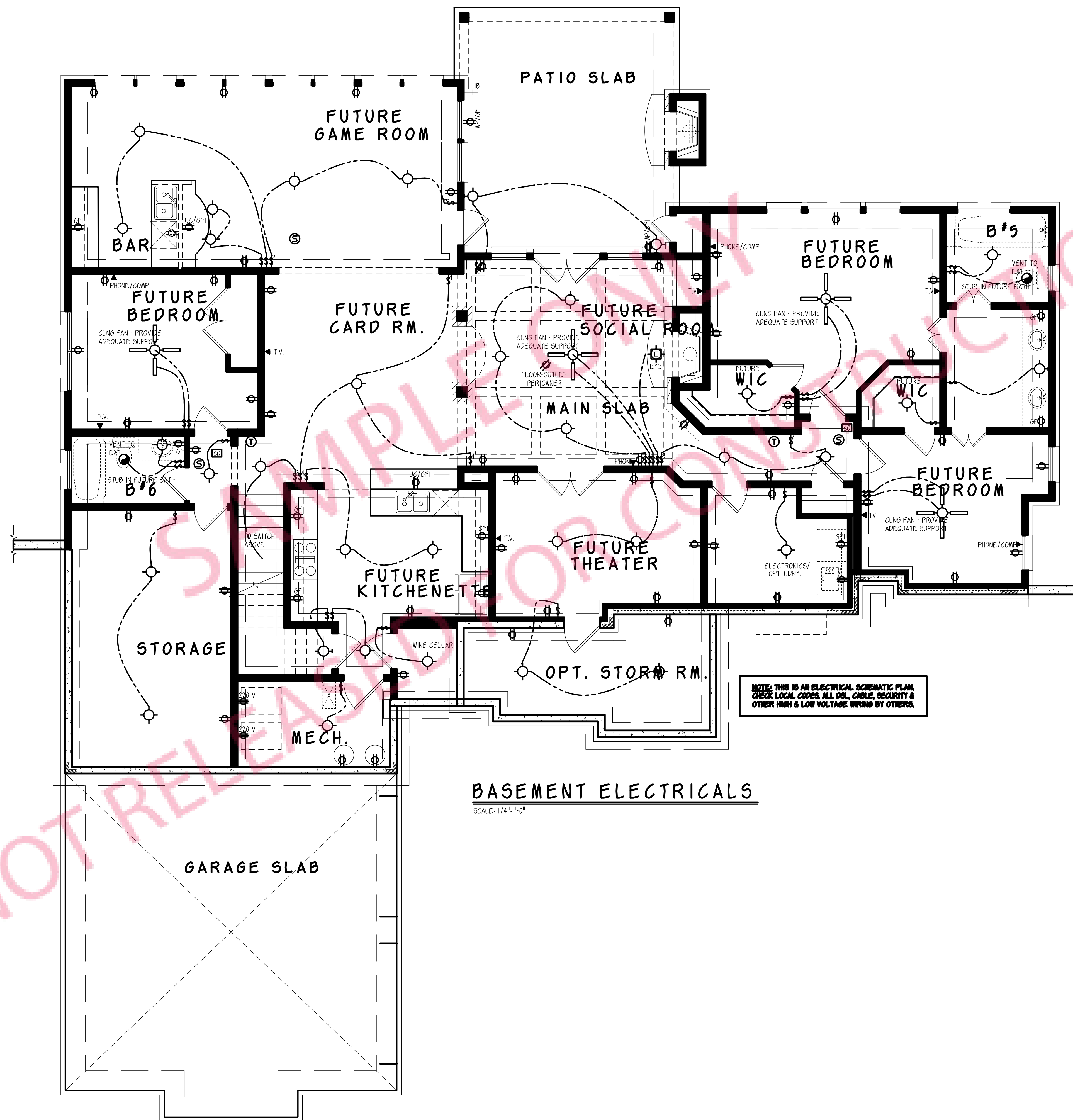


4 FOYER/DINING ROOM DETAIL
SCALE: 1/2" = 1'-0"



3 TYP. CROSS SECTION
D2 SCALE: 1/4" = 1'-0"

* STAIR HEADROOM: THE MINIMUM HEADROOM IN ALL PARTS OF THE STAIRWAY SHALL NOT BE LESS THAN 6 FEET, 8 INCHES (2032 mm) MEASURED VERTICALLY FROM THE SLOPED PLANE ADJOINING THE TREAD NOSING OR FROM THE FLOOR SURFACE OF THE LANDING OR PLATFORM.



BASEMENT ELECTRICALS

SCALE: 1/4"=1'-0"